

Transit Display



BUSES		BUSES	
Delmar @ 15th Street WB	16 min	14th Street @ Washington NB	14 min
Delmar @ 14th Street EB	25 min	14th Street @ Washington SB	11 min
		14th Street @ Washington NB	26 min

Relax Inn

Thank you for choosing Relax Inn!

Check In: 3:00 PM
Check Out: 11:00 AM
Continental Breakfast: 6:30-10:00 AM

LOCAL NEWS: Ro mo mi, sitio Ur? Laut quat...

10:05 AM
September 21, 2020

El Paso County COLORADO

Tuesday February 06, 2018

04 : 10 : 56 PM

41°F

County Centennial Hall

SERVICES WITH LOCATION & HOURS

NEXT BOCC MEETING

BUDGET BREAKDOWN

BUILDING MAPS

ORGANIZATION CHART

ELECTION INFORMATION

AGENDA

COMMISSIONER'S BIO

DISTRICT MAP

Working together, we provide leadership, resources and

Vehicle

- Uber XL
- Uber Pool
- Uber X
- Uber SUV
- Uber Black

Metro Center

- Olentangy
- Griswold
- Shady Gr
- Shirley

Van Dorn Street

- Emmons
- Large

12:20 PM 27°F

Metro Map

Big Apple Hotel

10:15 AM
September 21, 2020

Check in - 3:00 PM
Check out - 11:00 AM
Breakfast - 7-10 AM
Restaurant - 11 AM - 10 PM
Bar - 5 PM - 1 AM

Please contact concierge for any questions.

Directory

Map

Floor Plan

LOCAL NEWS: ...Ro mo mi, sitio teceperchil mos...

23RD ST NW-1 ST NW

- 3 Friendship Heights 3m
- 7 Chevy Chase Circle 6m
- 3 Southern Ave Station 21m
- 44 Potomac Park 4m
- 1 Minnesota Ave Station 6m
- 31 Potomac Park 13m
- 43 Potomac Park 17m
- 3 Friendship Heights 3m

PENNSYLVANIA AVE NW-22ND ST NW

- 31 Southern Ave Station 1m
- 31 Federal Triangle 22m
- 5 Ballston 12m
- 42 Friendship Heights 39m
- 31 Southern Ave Station 1m
- 31 Federal Triangle 22m
- 31 Naylor Rd Station 32m
- 9 Friendship Heights 8m

DC Attractions

CONNECTION CHURCH

20th August

PRAISE & WORSHIP

Come out and join us for a night of Worship and Praise.

Special Guest
Kara Lees

Vehicle	Base Fare	ETA	Base Fare
Lyft LIME	\$2.00	5	\$1.15
Lyft	\$0.70	3	\$1.15
Lyft Plus	\$1.15	1	\$2.00
Lyft Premier	\$14.00	7	\$2.00
Lyft Lux	\$7.00	5	\$7.00

Jackson-Deerborn

- 5 Souths Uptown -OM
- 5 Souths Uptown -1M
- 60 East Uptown -4M
- 56 Uptown -6M

Jackson (Blue)

- Orange Line Uptown -OM
- Orange Line Uptown -1M
- 3 Souths Uptown -2M
- 67 Souths Uptown -4M

Deerborn-Jackson

- 92 Norths Uptown -OM

Upcoming Events

- SUN 28** Bring Your Child to Work Day
June 28
San Diego Zoo
2920 Zoo Dr San Diego CA
- WED 01** Black Tie Dinner
July 1 @ 6:00 pm - 10:00 pm
Art Institute of Chicago
111 S Michigan Ave Chicago IL
- WED 08** Cupcake Eating Contest
July 8 @ 1:30 pm - 5:00 pm
Sushi Ichiban
24 NW Broadway Portland OR

Lake Island Station

METRO	TRANS	UBER
Republic Square Station	Guideslope at 4th	Washington
Guideslope at 2nd	Washington	25 min away
181 25th	South Park	25 min away
181 25th	South Park	25 min away
181 25th	South Park	25 min away

RICHMOND PUBLIC LIBRARY

Announcement: We will be closed Memorial Day.

STOP LOCATION	Route Name	See 10m 10m
STOP LOCATION	Route Name	See 10m 10m
STOP LOCATION	Route Name	See 10m 10m
STOP LOCATION	Route Name	See 10m 10m
STOP LOCATION	Route Name	See 10m 10m

Hale 'Aina

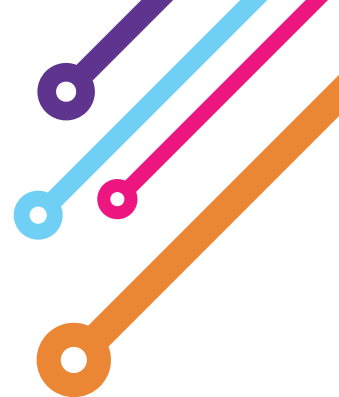
Health Center Pharmacy

Transit Display Features

- Real-time updates to ensure viewers see the most up-to-date transit information
- Specify the exact address or coordinates for more accurate transit options in the area
- Personalize the location filter to show stops within your desired distance radius
- Daypart your screen to show transit and traffic during different times of the day
- Show complimentary content such as traffic, weather, and RSS feeds
- Unlimited admin/users to access and update transit and content as needed
- Schedule transit and content ahead of time for more engagement
- Manage remotely over the internet from anywhere
- Eliminate the need for people to constantly check their phones for transit options
- Hundreds of customizable templates to keep content fresh



What to Display



Metro Real-time arrivals/departures for nearby metro stations



Buses Arrivals/departures from nearby bus stations as well as bus schedules



Rideshares Availability of Uber or Lyft rides and the wait times



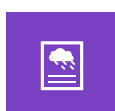
Bikes Discover where available public bikes are in the area



Scooters Display available scooters in the surrounding areas



Ferries Show arrival/departure times for the ferry stops



Weather Display forecasts and current weather conditions



Alerts Show emergency and CAP alerts e.g. amber alerts, snow predictions, etc.



Traffic Up-to-date live traffic for a selected location radius



RSS Feeds Automated live content feeds from your favorite channels

Components of a Transit Display

Commercial-grade Display

Selecting the display/screen is a critical aspect of building your transit display.

The three questions to ask yourself about your display are:

1. Does it need to be touch-enabled?
2. What size is appropriate for my space?
3. Do I need commercial-grade quality and warranty?

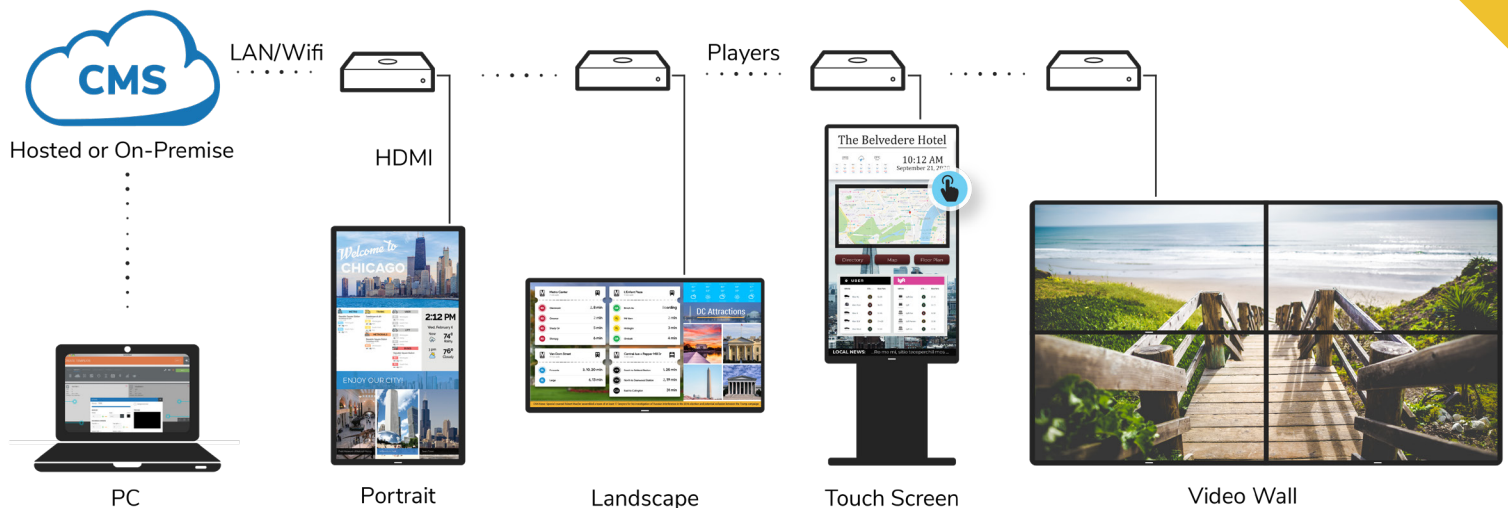
Media Player

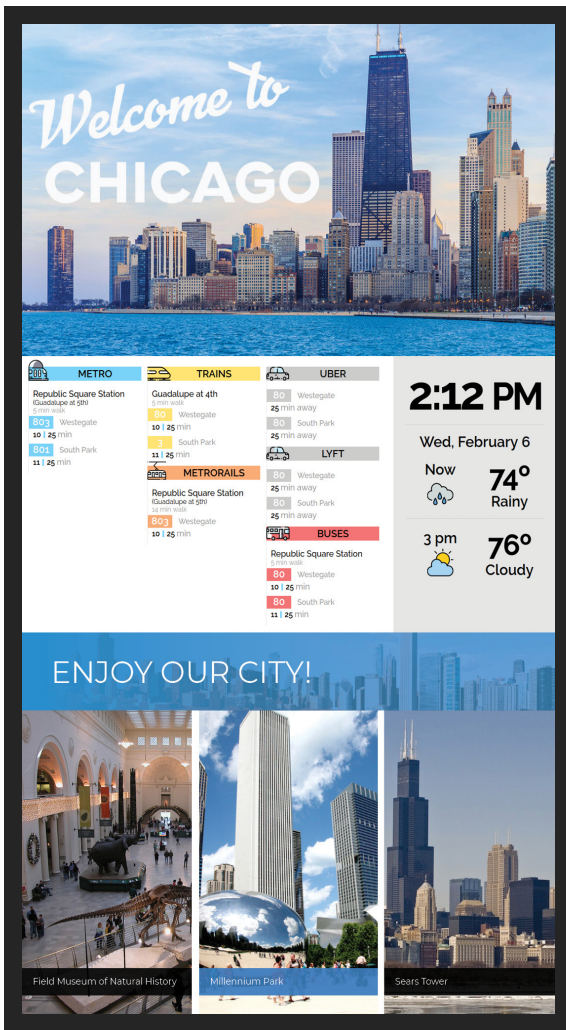
The media player is a small device that is connected to the display via HDMI and to the internet via Wi-Fi or a wired connection. It caches the content you'll showcase on your transit displays so they will never be blank, even when there is no internet connection.

Software

Digital signage software allows you to create and schedule the messages, graphics, and feeds that will display on your screens.

The software will often include pre-built transit templates that you can customize as well as content apps (think weather, news, sports) to create content that you can drag and drop into your "zones" i.e. different sections of your screen.





Mounts

Mounts have functional and aesthetic benefits:

1. Do you need to be able to adjust the angle of your sign?
2. Are you planning for a video wall or single display?

Naturally, you'll want to consider things such as cost, support, reputation for quality, and ease of installation when evaluating mounting solutions.

Enclosures

Enclosures complement your decor and showcase eye-catching content.

Behind the scenes, the enclosures enclose a custom rack and offer space to hide equipment such as a digital signage media player and cables.

The enclosures are designed to be aesthetically pleasing, but also to provide ventilation, hide display bezels, expose power buttons, and make accessing digital signage media players as easy as possible.

- VESA® 200 x 200 up to 600 x 400mm compatible
- Eight-way tool-less adjustment for flush alignment
- Removable front cover and pull-out mount for ease of access
- Low profile (ADA compliant) design

- Aesthetic options include multiple colors, vinyl wraps, etc. to promote brand awareness
- Pre-assembled to simplify installation
- Stainless steel construction with mounting hardware



866.310.4923

www.mvixdigitalsignage.com



How It Works

1

Install the Media Player & Screen

The media player connects to the internet wirelessly or via an ethernet cable, and to the screen using an HDMI cable.

2

Create Transit Templates

The web-based software, accessible from anywhere, enables you to create a transit display and add other content to compliment it.

3

Publish & Display Content

Once the transit template is ready in the software, the media player auto-downloads it and displays it on the screen.

4

Update Content/Reschedule

Remote access to the software allows you to easily update your content and playback schedules all from one login.



866.310.4923

www.mvixdigitalsignage.com



How Much Does It Cost?

Cost of Hardware

The cost of hardware will depend on the needs of your implementation. A strong recommendation is to get commercial-grade hardware that can handle being on 24/7. Commercial-grade players and displays also come with full warranties.

Cost of Content Creation

There are two ways to account for cost of content. You can have your design team create the content or you can pay an agency or freelancer to create the content. The second option (which is usually the cheaper one) is to select digital signage software that includes customizable content templates, feeds or an app store.

Cost of Installation/Implementation

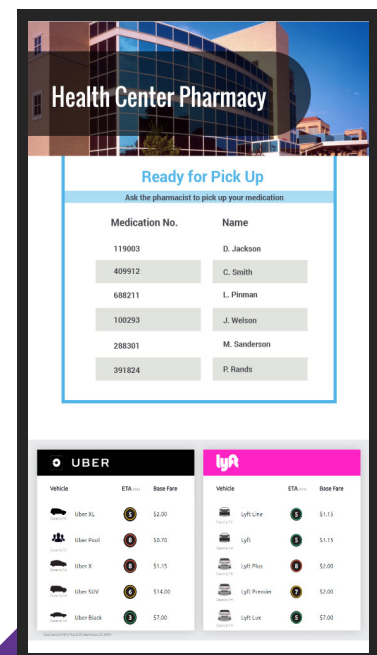
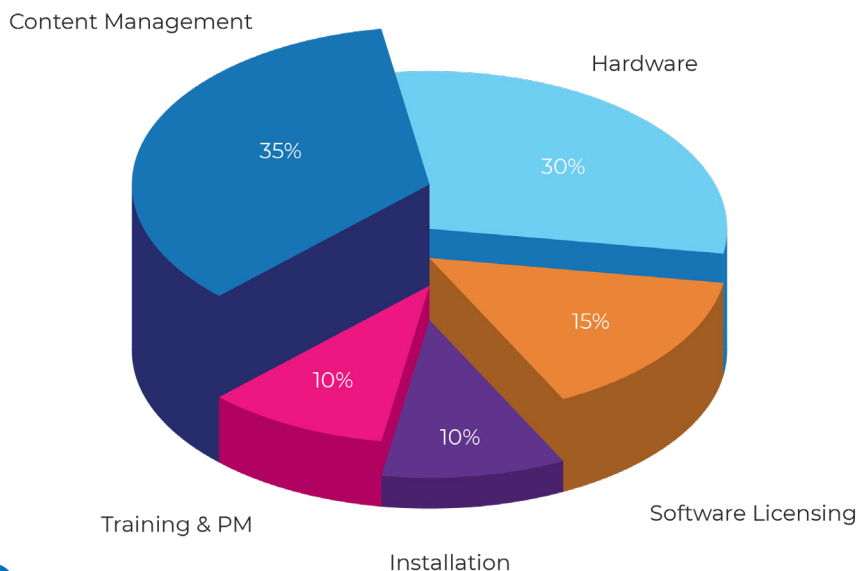
Will the vendor for your transit display provide turn-key service i.e. handle mounting your sign, deploying your content, and ensuring network connectivity? If not, include these estimated costs. If you're considering doing it yourself, take into account the expected time required to get your transit display up-and-running.

Ongoing Support and Training

Many digital signage providers will include service and support as part of your cost. Be clear on the length of this agreement and have a plan in place for ongoing support and training. If this is an internal resource, calculate what percentage of their time will be allocated to troubleshooting and on-boarding new internal resources to the digital signage work flow.

CapEx or OpEx?

What type of pricing model works best for you? Getting a subscription will spread the cost out over time. Conversely, a one-time purchase may be easier even though the initial cost is higher.





Mvix

Content Rich Digital Signage



23475 Rock Haven Way #125
Sterling, VA 20166
mvixdigitalsignage.com
(703) 382-1739

